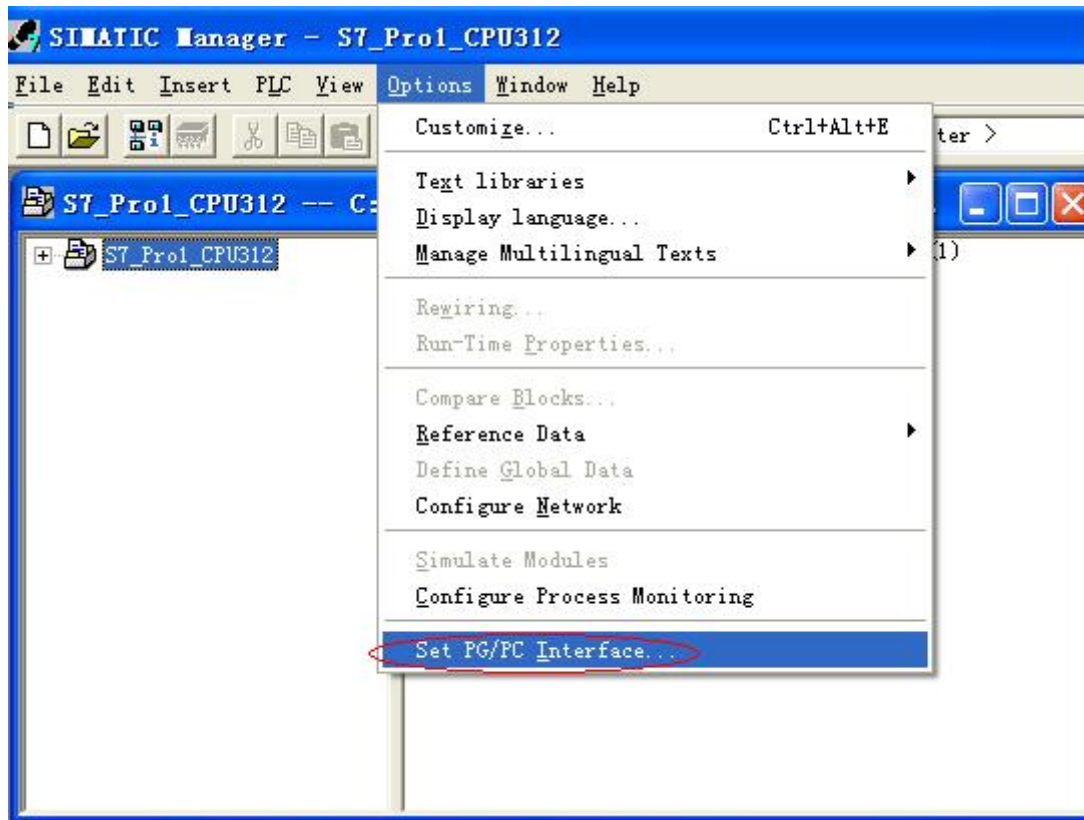


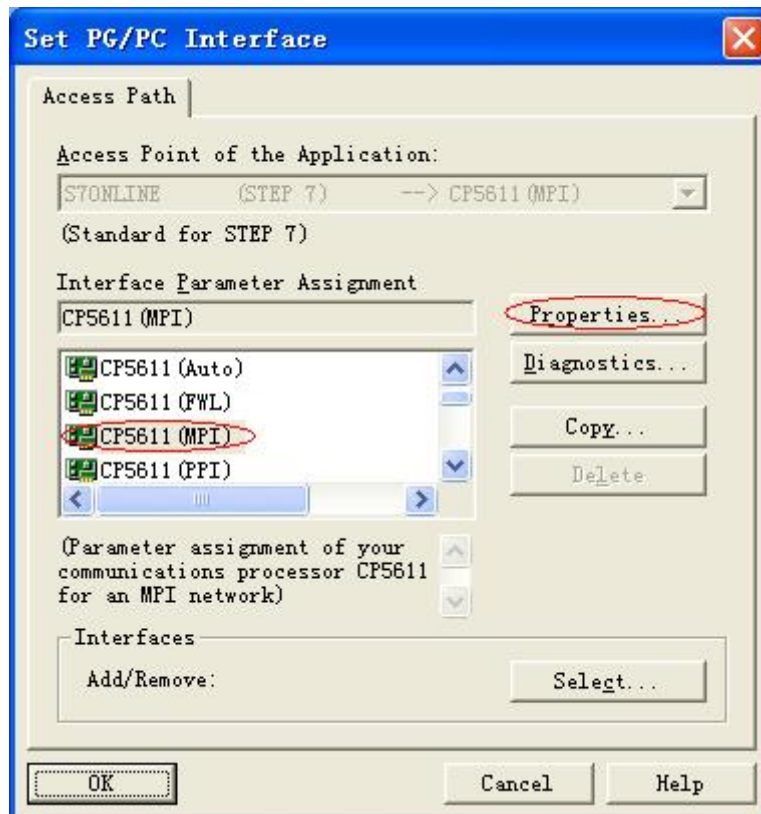
The test of CP5611 communication card

Please insert CP5611 into PCI slot and install the driver. The details please refer to the “The installation of CP5611 communication card” document.

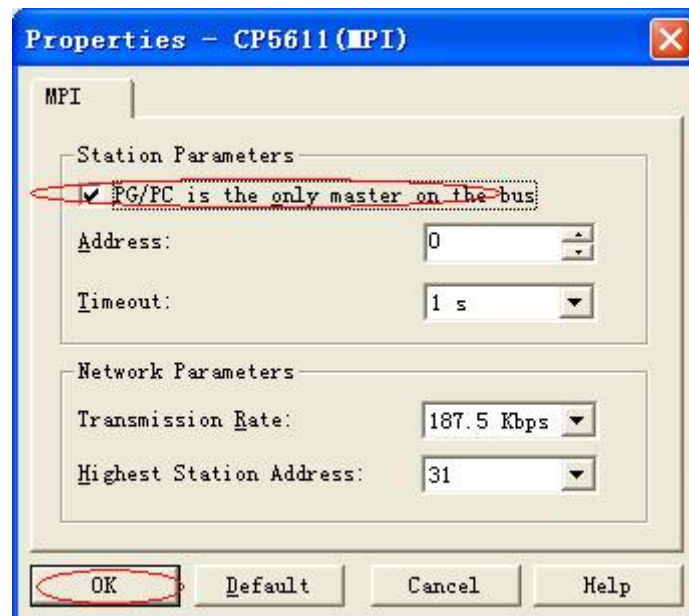
1. Open Step7 V5.2 software, click Option-->Set PG/PC Interface, like the following picture:



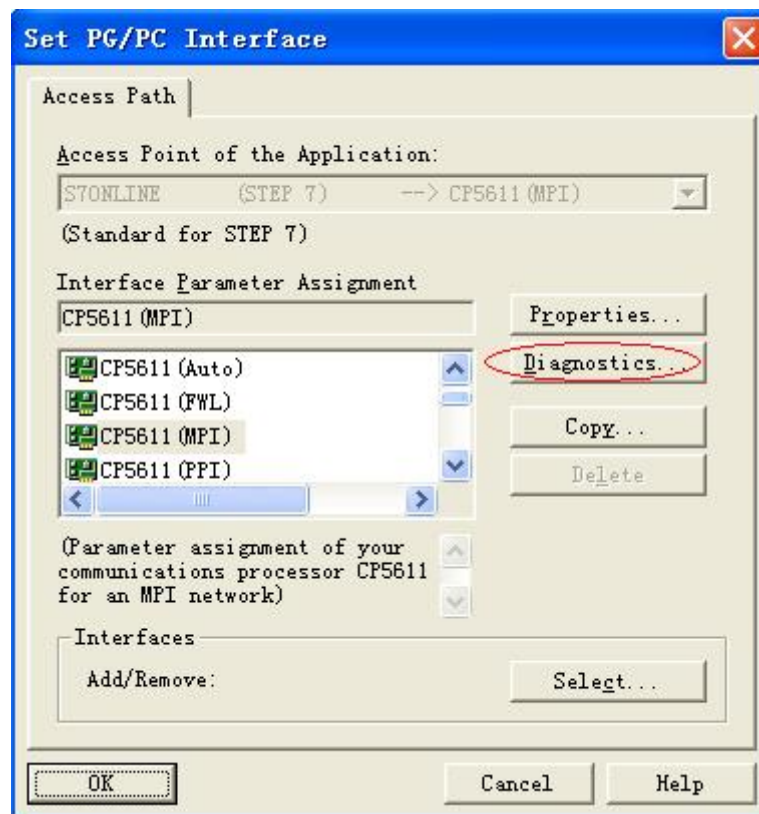
2. Please choose “CP5611 (MPI)” in the Set PG/PC Interface window, click Properties...button.



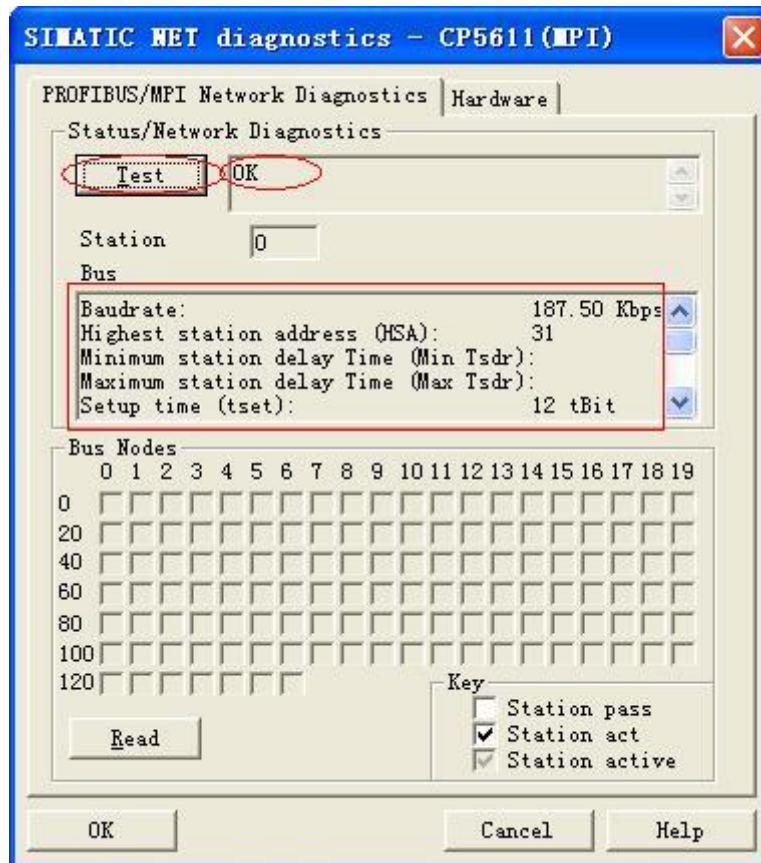
3. Choose "PG/PC is the only master on the bus" option and then click "OK".



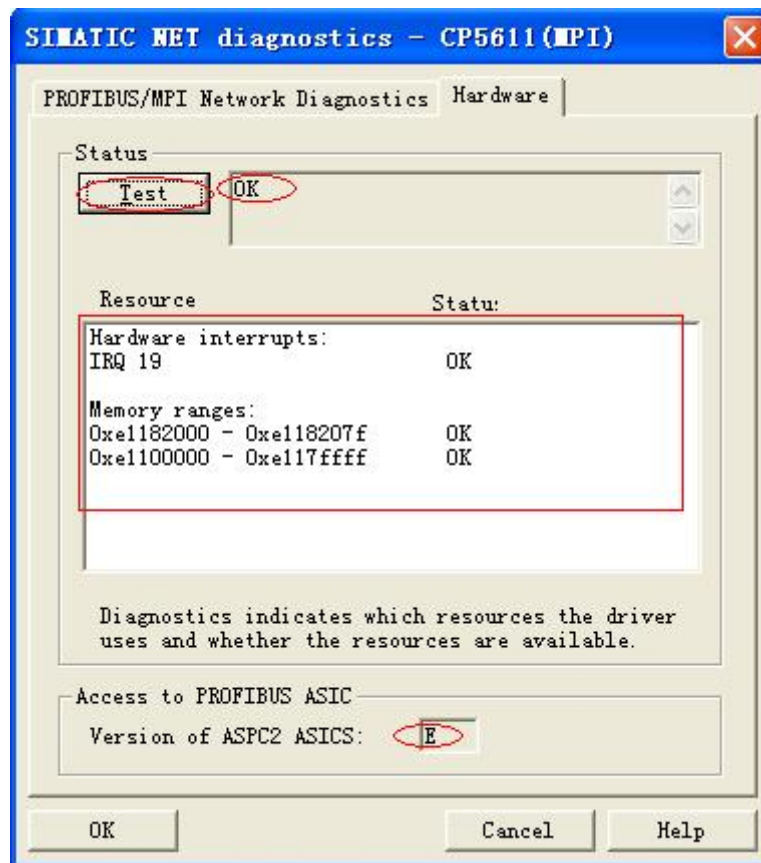
4. Click Diagnostics... button to enter test window.



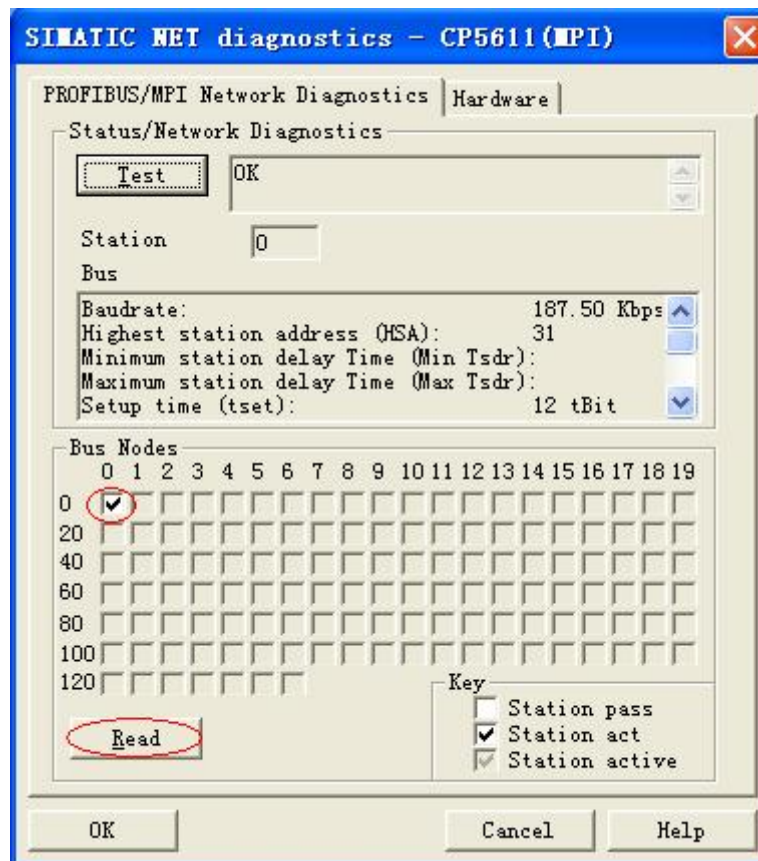
5. Choose "PROFIBUS/MPI NetWork Diagnostics" panel and click Test button then will appear "OK" in the right box and such words in the red frame as the following picture. It shows this test has passed.



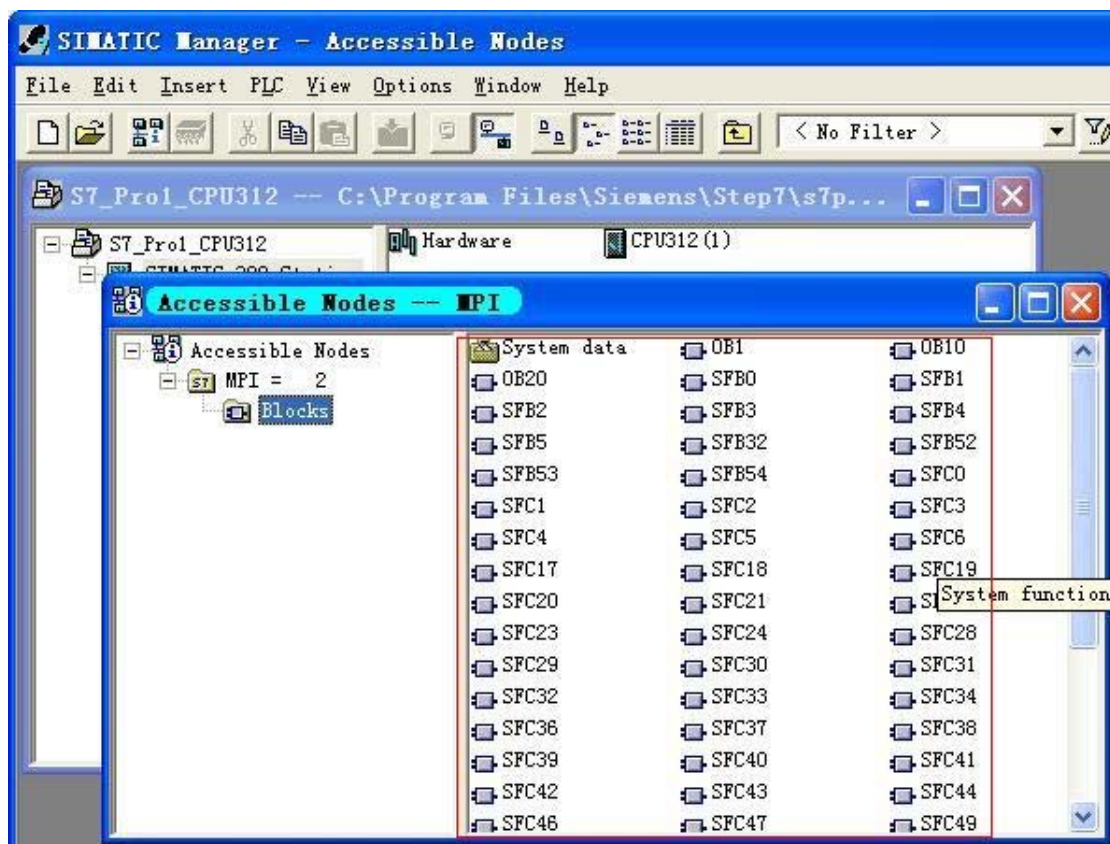
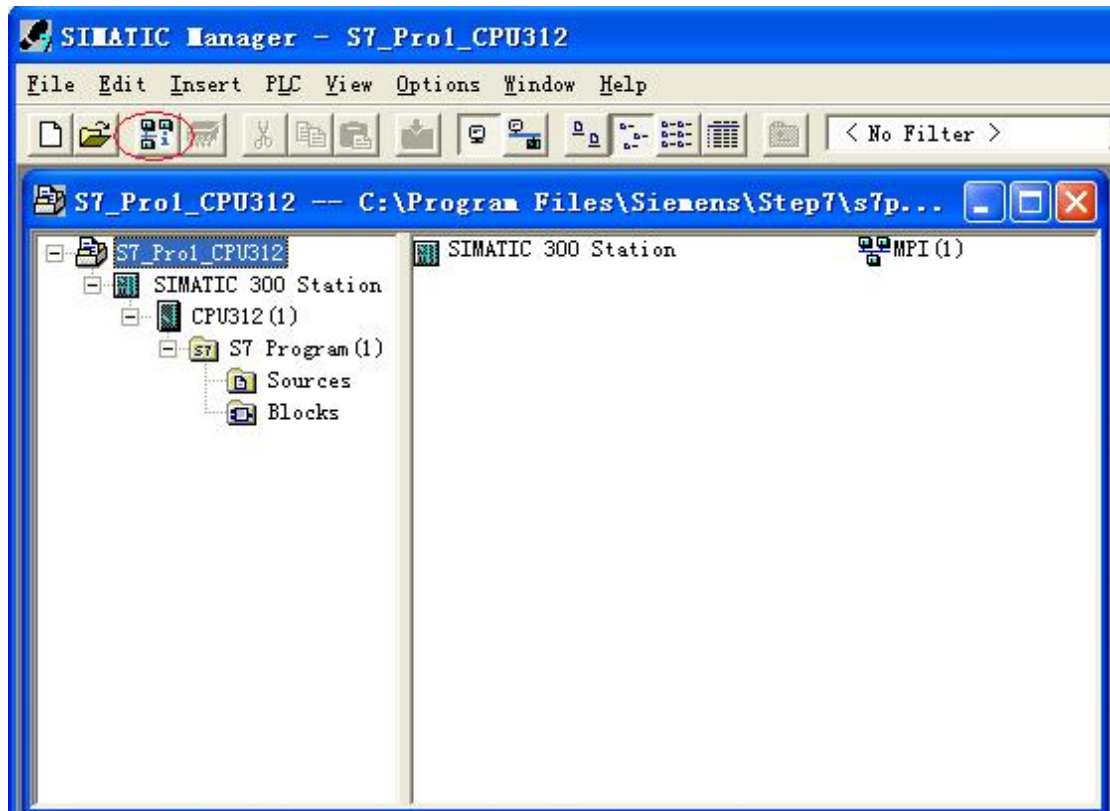
6. Choose "Hardware" panel and click Test button then will appear "OK" in the right box and three "OK" words in the following red frame and an "E" word at the bottom of the window as the following picture. It shows this test also has passed.



7. Return to PROFIBUS/MPI Network Diagnostics panel and click the bottom "Read" button. If the "BUS NODE" 0-0 position is been selected, it shows the third step test has passed.



8. Please connect CP5611 with S7-300 CPU, click the button in the red circle and appear the data in the red frame of the following picture. It shows the fourth step test has passed. At this time, all the tests have been finished.



If the test is not OK according to the above step, please change the PCI slot or computer to see if the CP5611 has the problem itself. Sometimes there is clash between PCI slot and CP5611 due to computer configuration and use condition of the PCI slot.